



Integrated Pest Management Program

Department of Plant Science and Landscape
Architecture

Fruit Update – 8/1/25

Evan Lentz – Assistant Extension Educator

Summer Rots

Another reminder to stay covered for your summer rots. This last rain event has introduced quite a bit of moisture into our orchards and will likely increase the disease we've been seeing. My scouts and I have seen quite a bit of Bitter Rot again this season. However, many of you are doing a good job staying covered. We do not look as bad as this time last year.

Sooty Blotch; Flyspeck



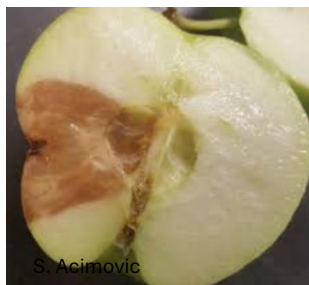
UMass

Bitter Rot



S. Acimovic

White Rot



S. Acimovic

Black Rot



H. Faubert

For information on materials and efficacy, please consult the [New England Tree Fruit Management Guide's Spray Table](#).

Downey Mildew in Grapes

The wet, warm weather favors this disease's formation. It can spread quickly and can even infect your fruit if fungicide cover is not maintained directly post bloom through harvest. If fruit is infected, berries will begin to shrivel, darken and eventually fall off onto the vineyard floor. Summer pruning and an adequate fungicide schedule will usually keep the disease under control. For details on rates and materials, please consult the [New England Small Fruit Management Guide](#).





Integrated Pest Management Program

Department of Plant Science and Landscape
Architecture

Reminder about Tissue Sampling:

Just a little reminder.....tissue sampling should be part of your nutrient management program. It is the best tool that we have to understand the nutritional statuses of our plants. Combined with regular soil testing, it allows for informed decisions and optimal plant nutrient levels.

- Optimal Timing for Analyses:
 - Tree Fruit – 60-70 days post petal fall
 - Grapes – bloom or version*
 - Brambles – late July to mid-August*
 - Blueberries – late July to mid-August*
 - Strawberries – at renovation
- How to Collect Samples:
 - Tree Fruit – collect leaves from this year's growth from the middle of a shoot (avoid vigorous suckers)
 - Berries – collect the most recently matured leaves
 - Grapes – collect petioles from young fully expanded leaves

Samples need to be rinsed and dried before being shipped or dropped off to the UConn Soil Nutrient Analysis Laboratory (SNAL). Instructions for sampling and submission forms can be found here at the SNAL website: <https://soiltesting.cahnr.uconn.edu/analysis/> I can assist with this process if you are unsure; please reach out.

Farm Succession Survey – from Kristen Devlin (Penn State)

Dear Farmer,

I am writing from the [Northeast Regional Center for Rural Development](#) (NERCRD), based at Penn State, to request your help in distributing a survey to farm owners in your network. The goal of the survey is to **gain insights from farm owners on the challenges and successes of farm transition, succession planning, and generational change**. Feedback we receive will directly impact programs and policies aimed at supporting farmers through transition processes, ensuring that their needs and perspectives are heard.

The survey:

- is open to any farm owner in the Northeast U.S.*
- takes approximately 15-20 minutes to complete, and all responses are confidential; and,
- is a collaboration between the PA Department of Agriculture, Penn State Extension, PA Farm Link, and NERCRD.

More information about the survey [is available here](#). The survey can be completed using this link: https://pennstate.qualtrics.com/jfe/form/SV_agyxK32aFHuM78G



Integrated Pest Management Program

Department of Plant Science and Landscape
Architecture

Special Report – 2025 Acts Affecting Animals and Agriculture

This special report was compiled to highlight all of the new acts passed in 2025 that could directly affect your farming operation. I encourage you all to review this document, especially sections that may pertain to your situation. It's fairly brief.

[>>>> Read the Report Here <<<<](#)

The information in this document is for educational purposes only. The recommendations contained are based on the best available knowledge at the time of publication. Any reference to commercial products, trade, or brand names is for information only, and no endorsement or approval is intended. UConn Extension does not guarantee or warrant the standard of any product referenced or imply approval of the product to the exclusion of others which also may be available. The University of Connecticut, UConn Extension, and College of Agriculture, Health, and Natural Resources are equal opportunity program providers and employers.